

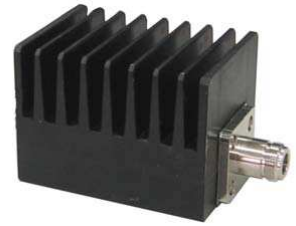


禾豐開發科技有限公司 HONOVA RESOURCES LTD.

TERMINATION ,LOAD

HTL-xxW-xG-xM

Impedance : 50Ω



	Power (Watt)	Frequency Range (GHz)	VSWR (max.)	Connector * (male)	Operational temperature
HTL-60W-4G-NM	60W	DC-4.0	1.25:1	N	-10°C~ 50°C
HTL-50W-2G-xM	50W	DC-2.0	1.15:1	N / DIN	-10°C~ 50°C
HTL-50W-4G-xM	50W	DC-1.0	1.05:1	N / DIN	-10°C~ 50°C
		1.0-3.0	1.15:1		
		2.0-4.0	1.25:1		
HTL-30W-3G-NM	30W	DC-3.0	1.30:1	N	-10°C~ 50°C
HTL-25W-2G-xM	25W	DC-2.0	1.15:1	N / DIN	-10°C~ 50°C
HTL-25W-4G-xM	25W	DC-1.0	1.05:1	N / DIN	-10°C~ 50°C
		1.0-3.0	1.15:1		
		3.0-4.0	1.25:1		
HTL-25W-6G-xM	25W	DC-6.0	1.25:1	N / DIN	-10°C~ 50°C
HTL-25W-12G-xM	25W	DC-12.4	1.30:1	N / DIN	-10°C~ 50°C
HTL-25W-18G-xM	25W	DC-18.0	1.50:1	N / DIN	-10°C~ 50°C

*Female available upon request



15F-7, No. 880, Zhongjheng Rd., jhonghe City, Taipei County 235, Taiwan, R.O.C.
台北縣中和市中正路880號15樓-7 TEL : 886-2-8228-6089 FAX : 886-2-8228-6039